

- THE -

NEW HUBER

HUBER ENGINES

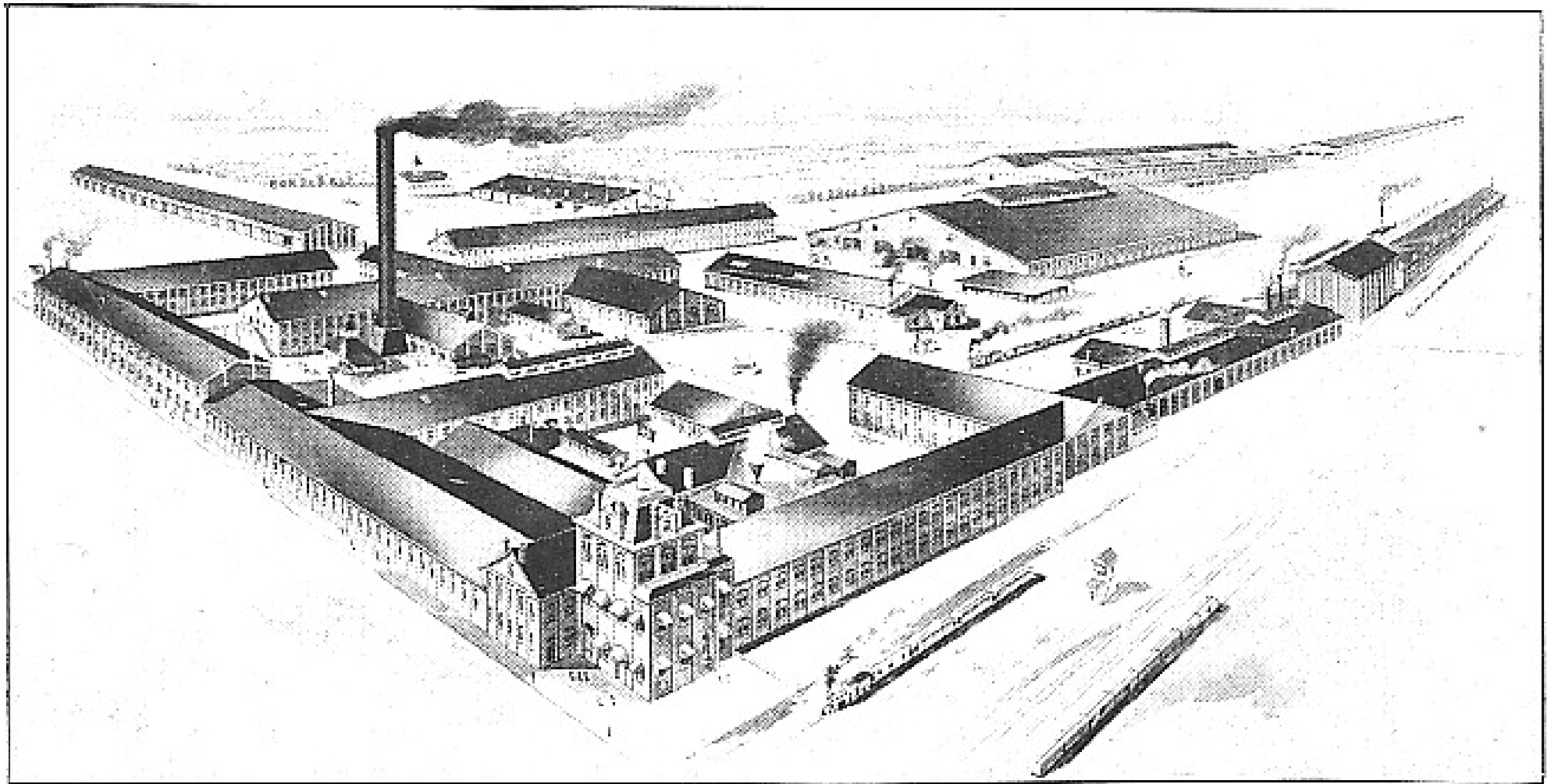
— AND —

THRESHING MACHINERY

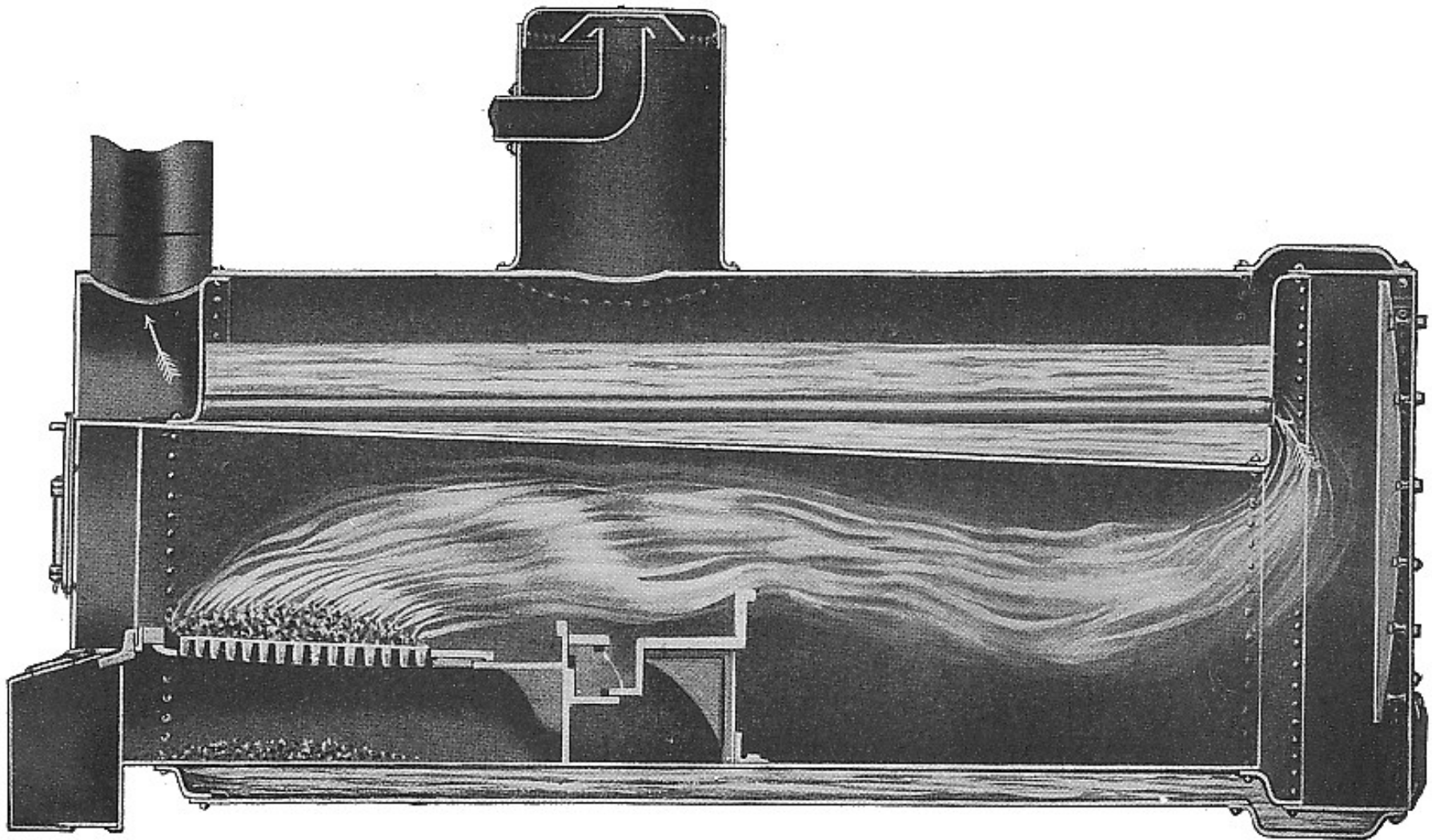


THE HUBER MANUFACTURING CO.
MARION, OHIO

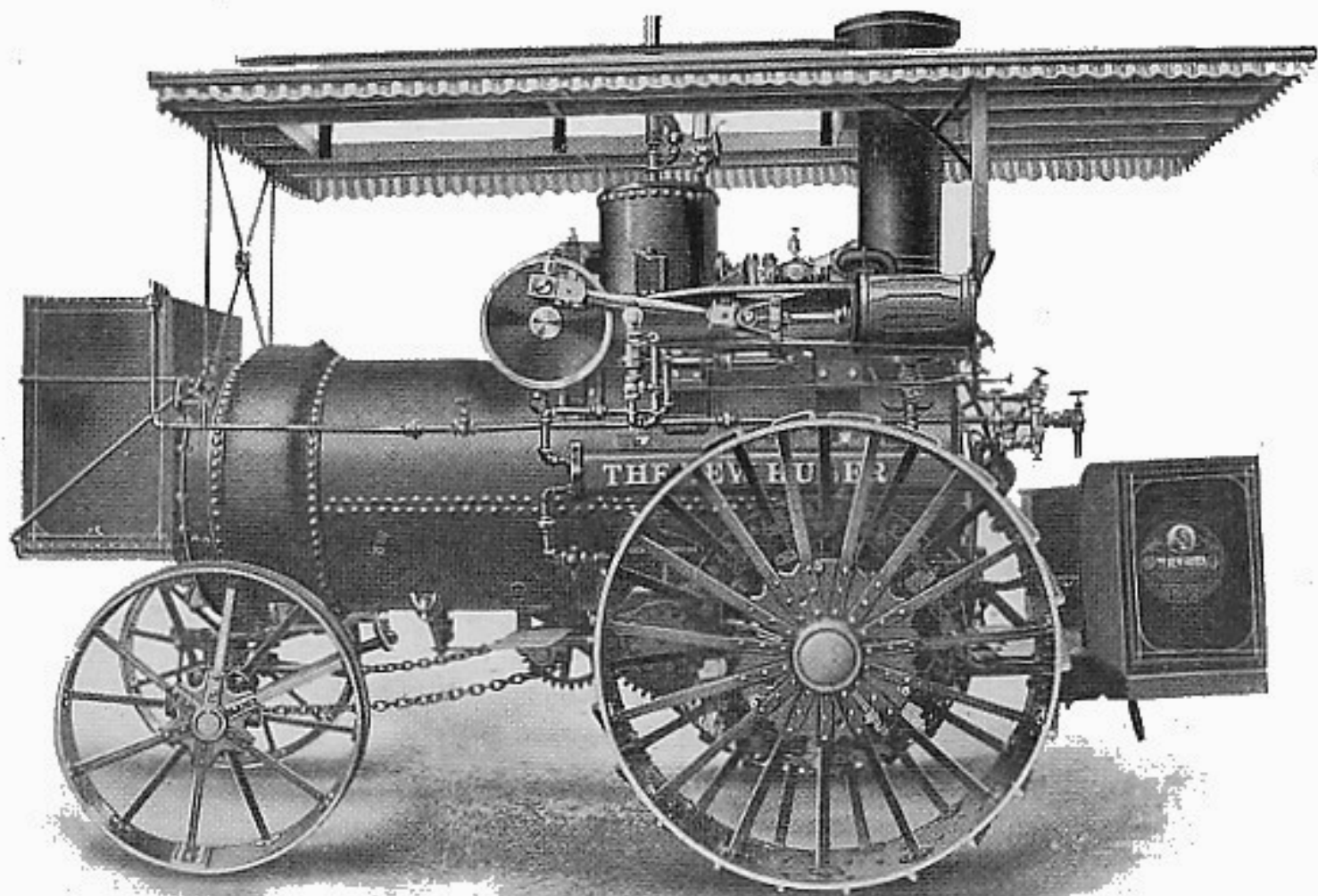
BRANCH HOUSE : HARRISBURG, PENNSYLVANIA



FACTORY OF THE HUBER MANUFACTURING COMPANY,
MARION, OHIO

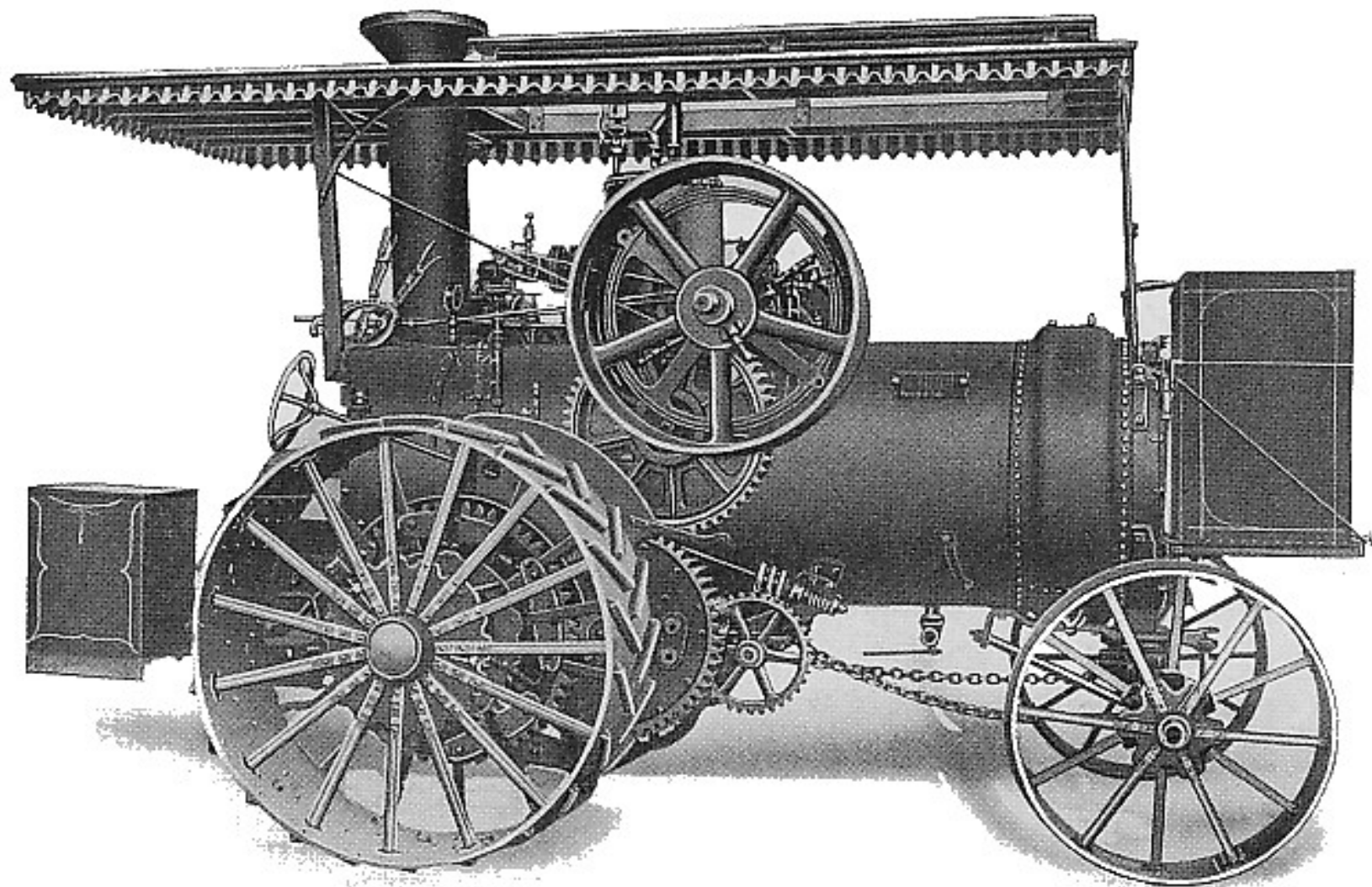


HUBER RETURN FLUE BOILER
The Type of Boiler used for all Huber Engines



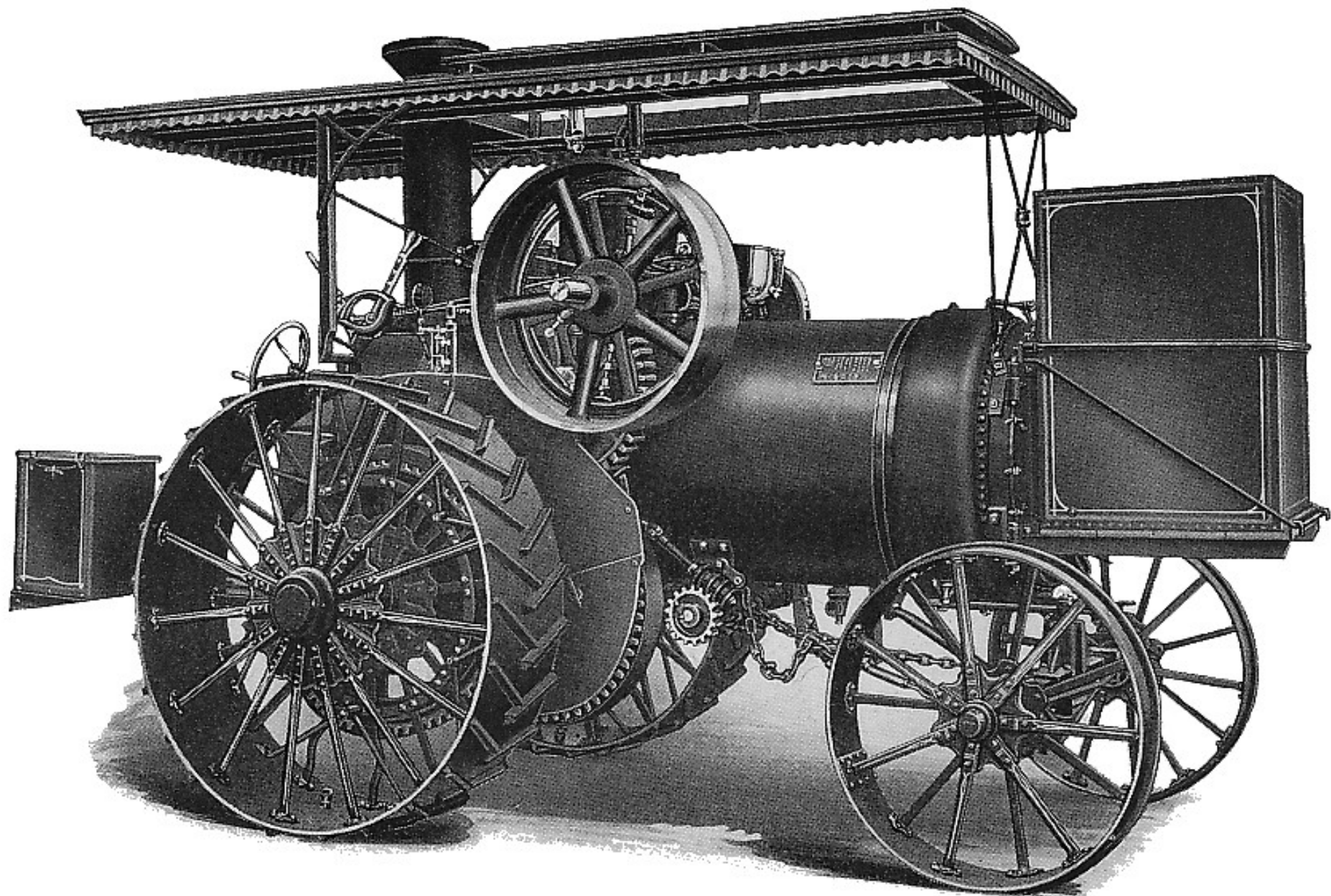
Cylinder Side

THE LEFT-HAND THRESHING ENGINE

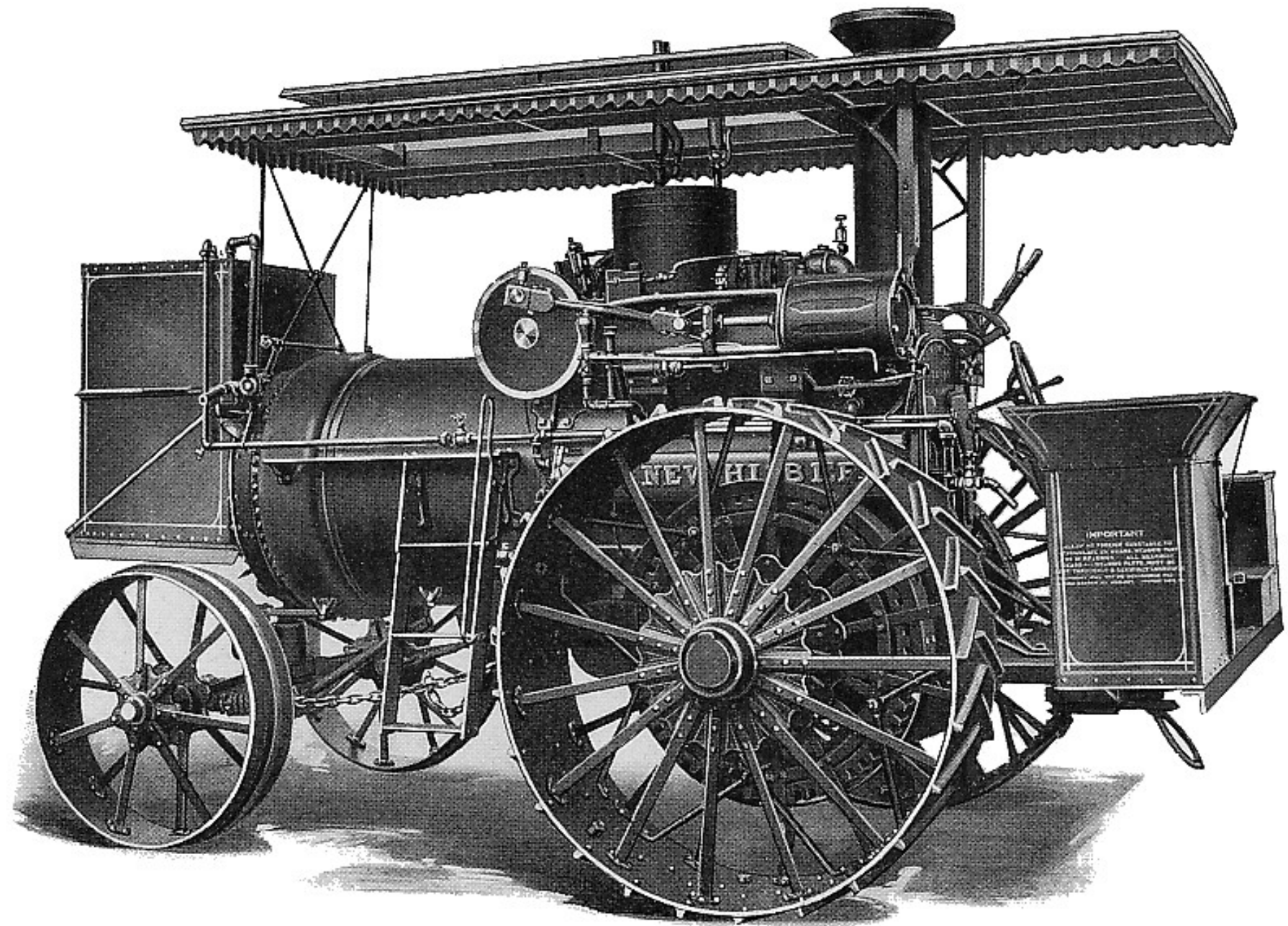


Gear Side

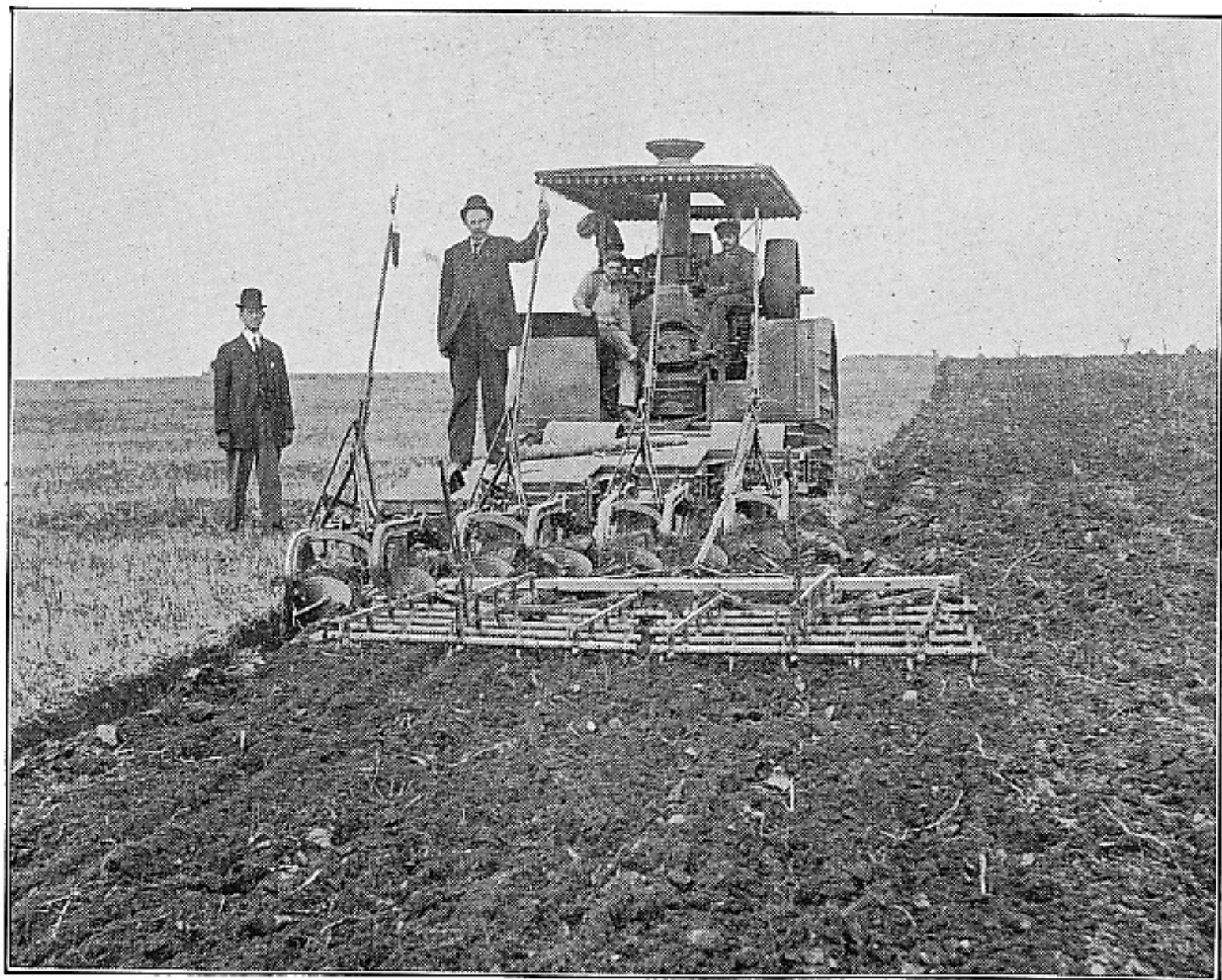
THE THRESHING ENGINE



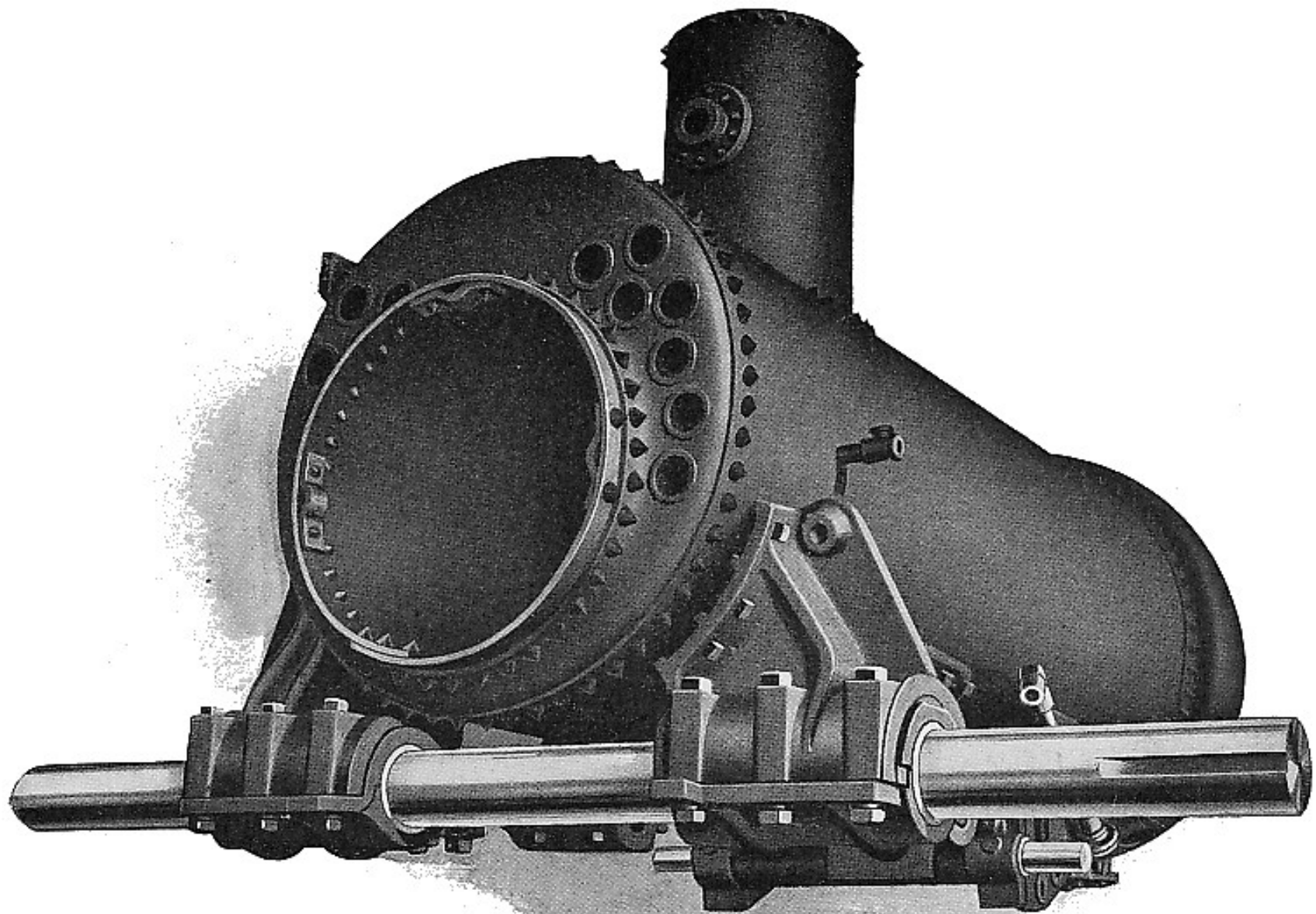
THE PLOW ENGINE



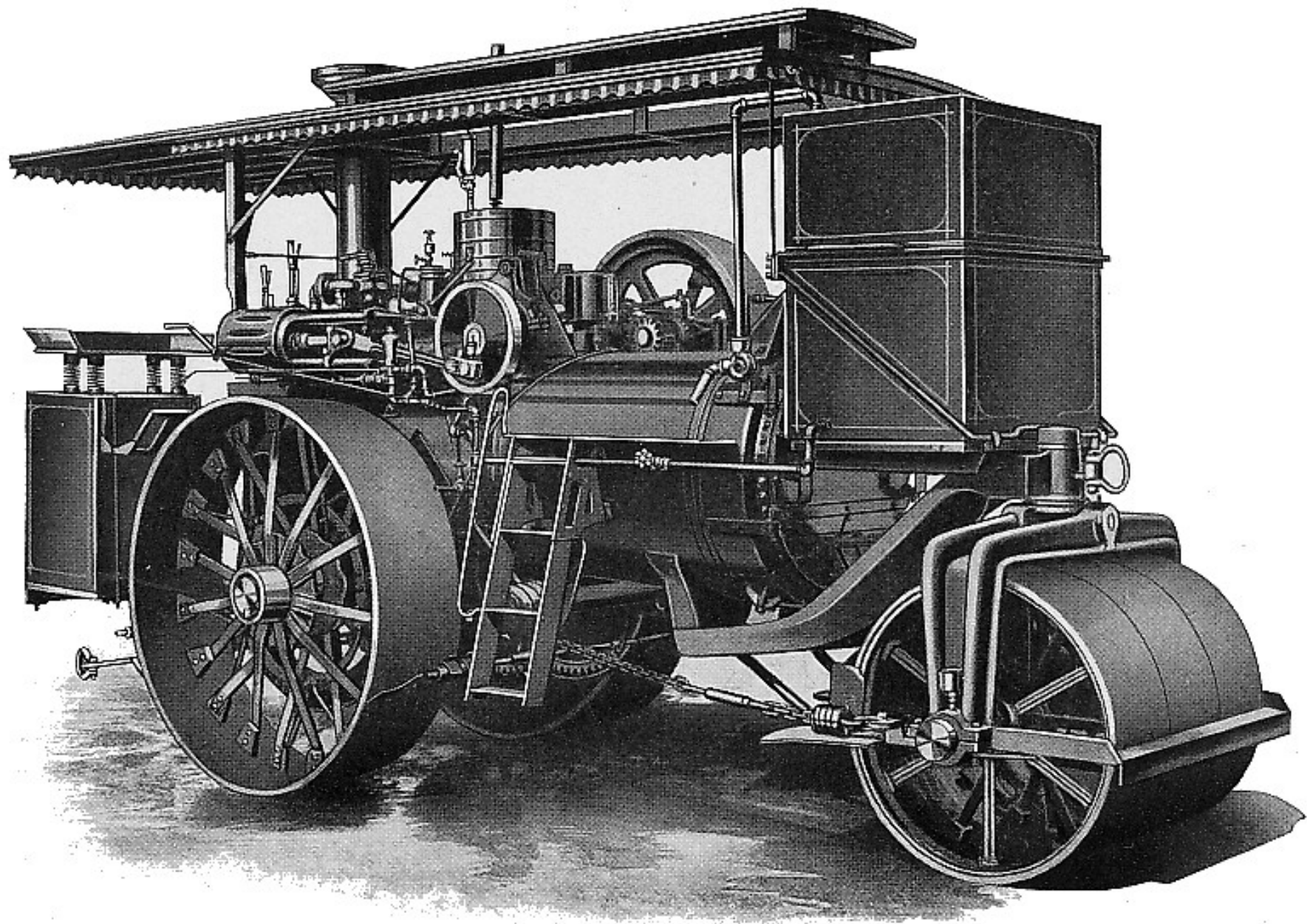
THE PLOW ENGINE



HUBER ENGINE PLOWING



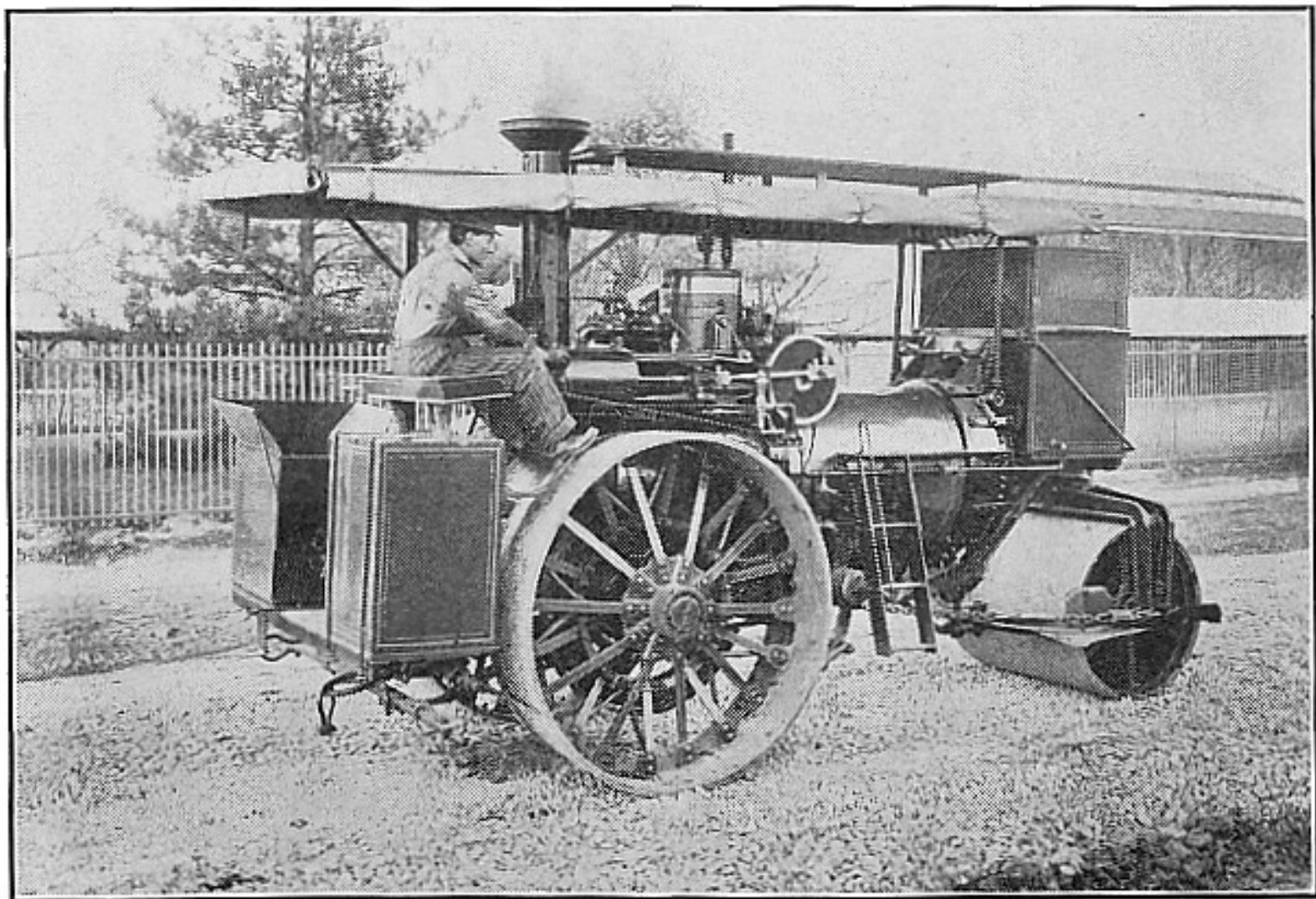
MOUNTING FOR CONTRACTOR AND PLOW ENGINES



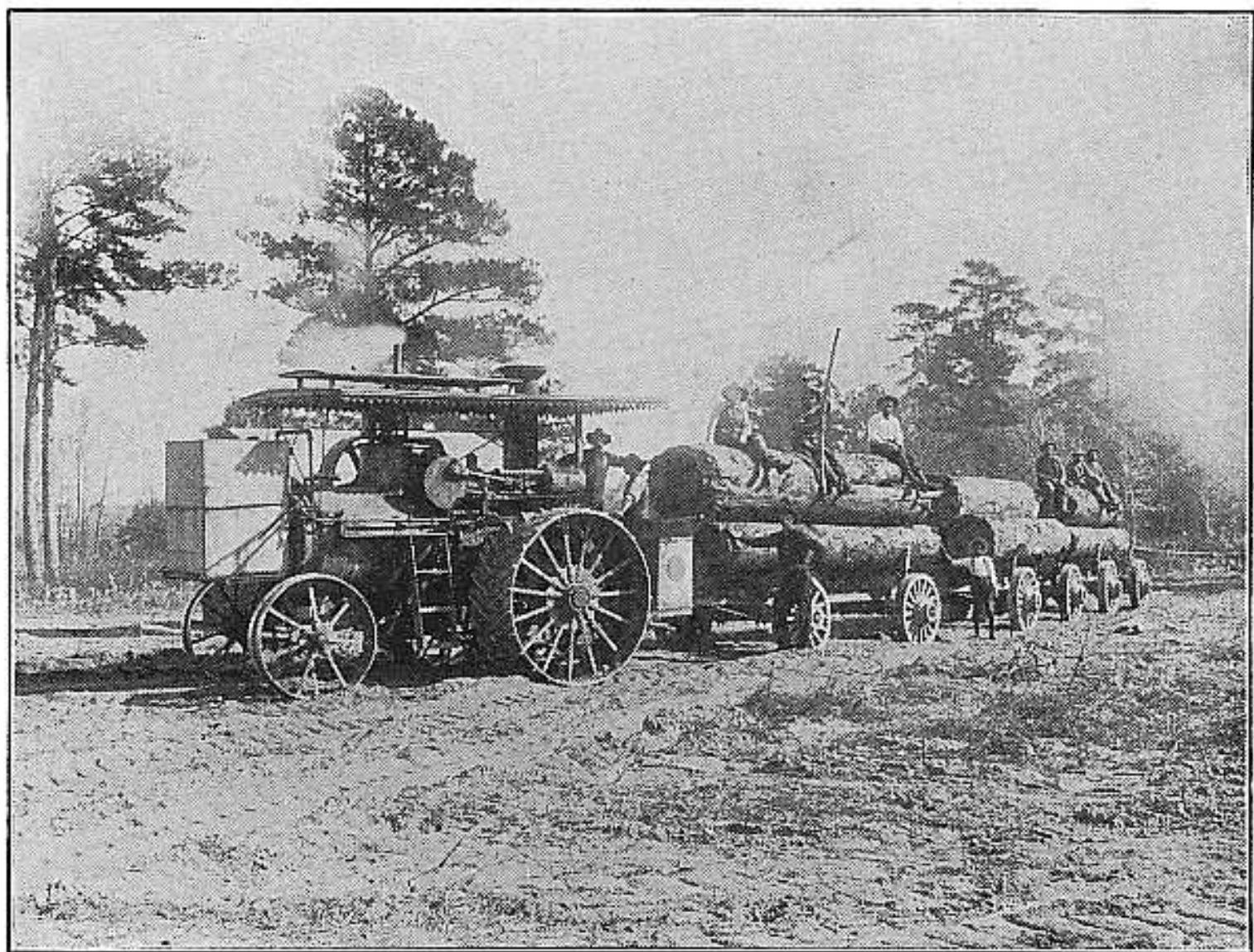
COMBINATION OUTFIT AS ROLLER



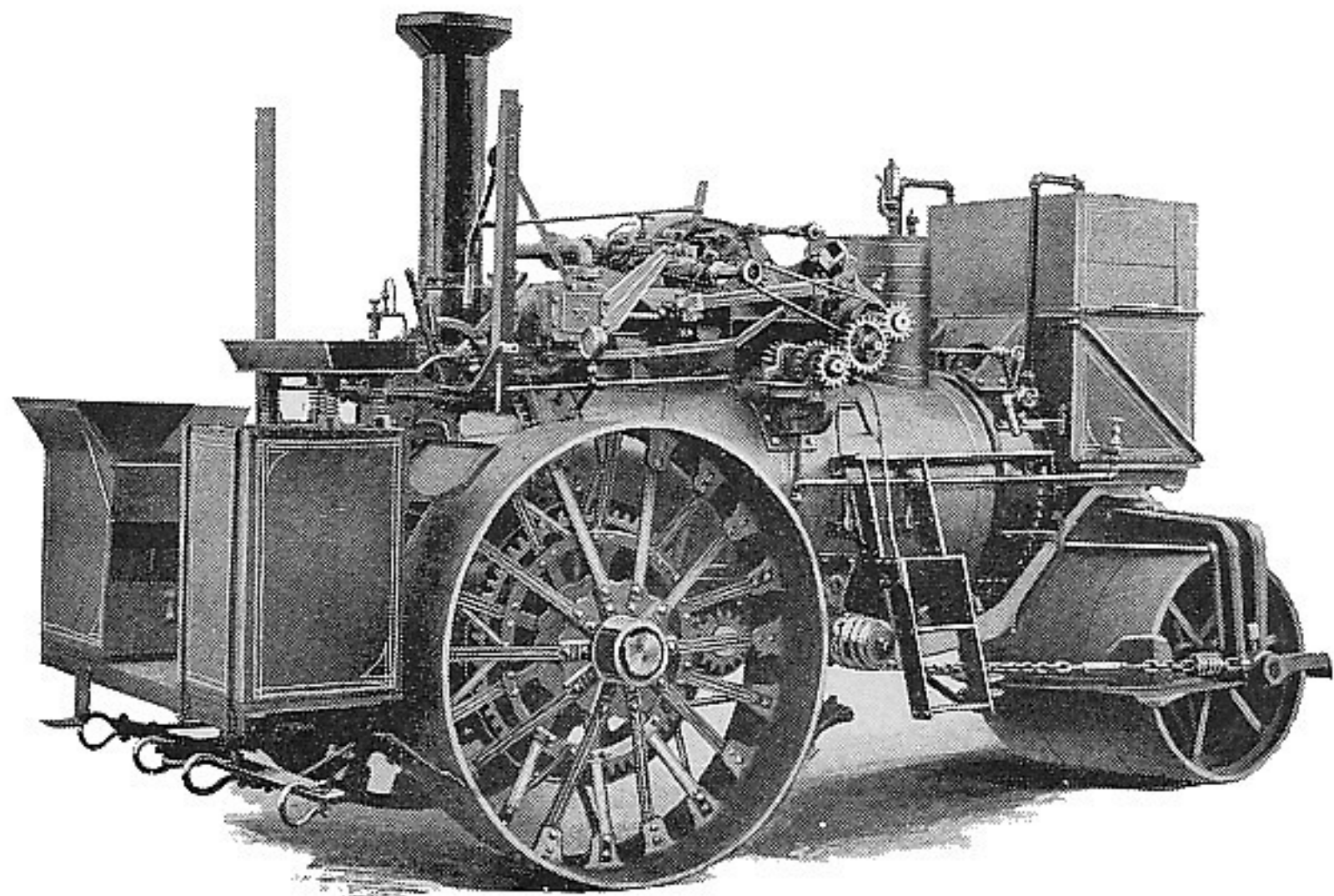
PLOWING WITH THE HUBER



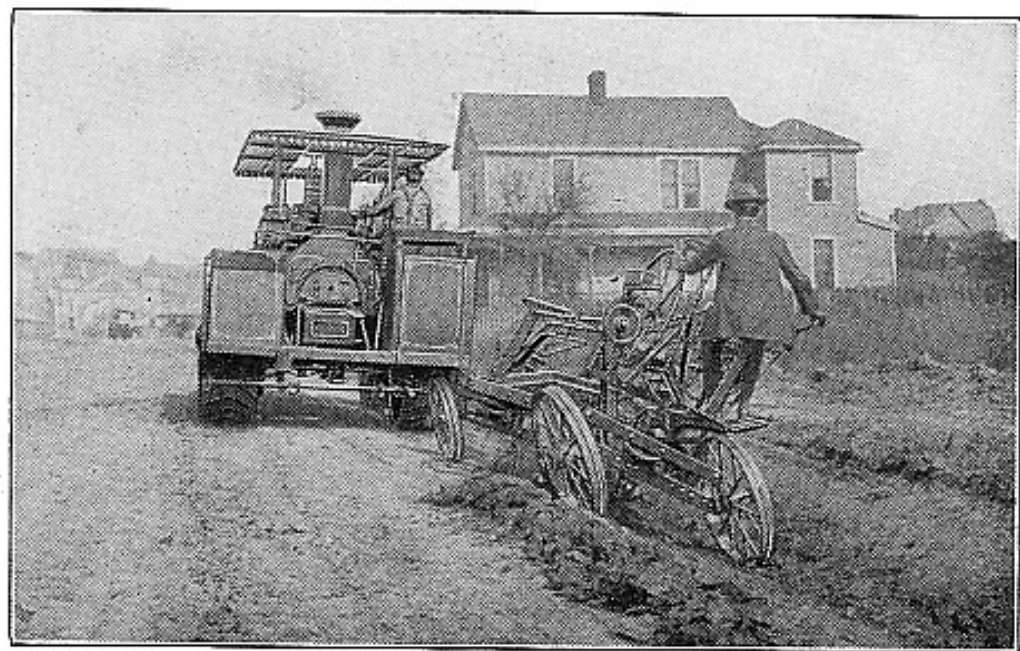
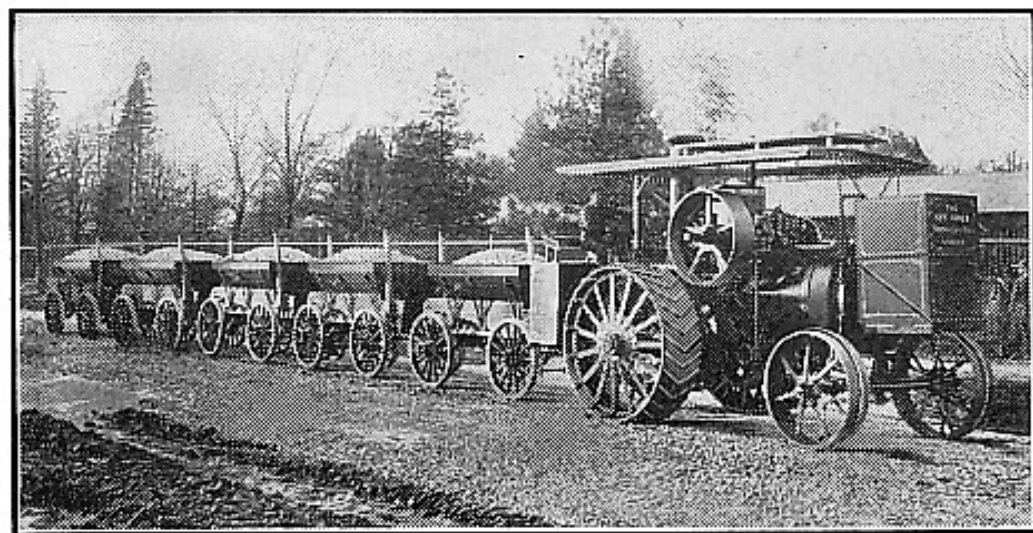
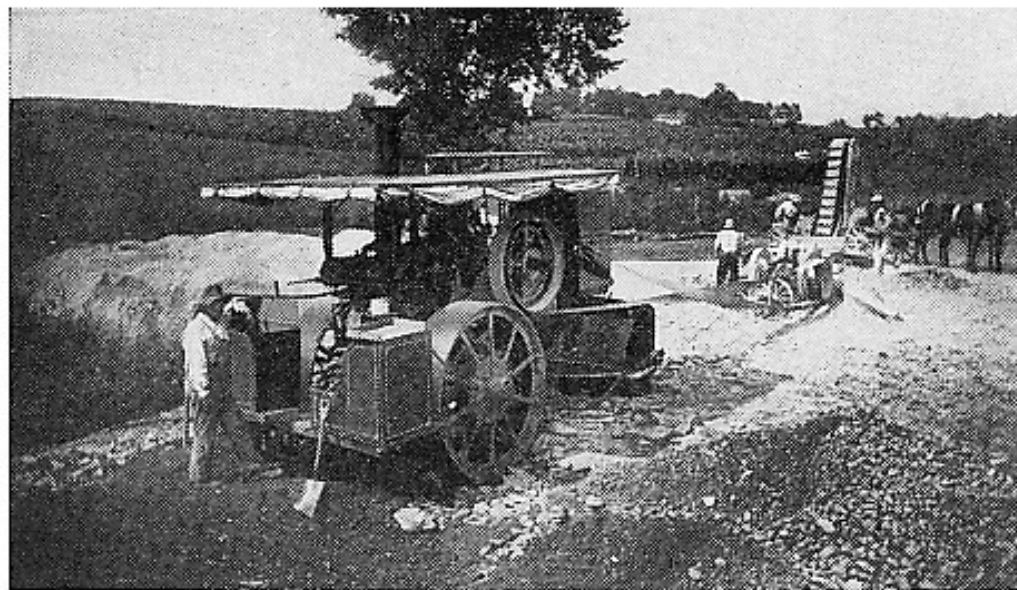
ROLLER IN OPERATION

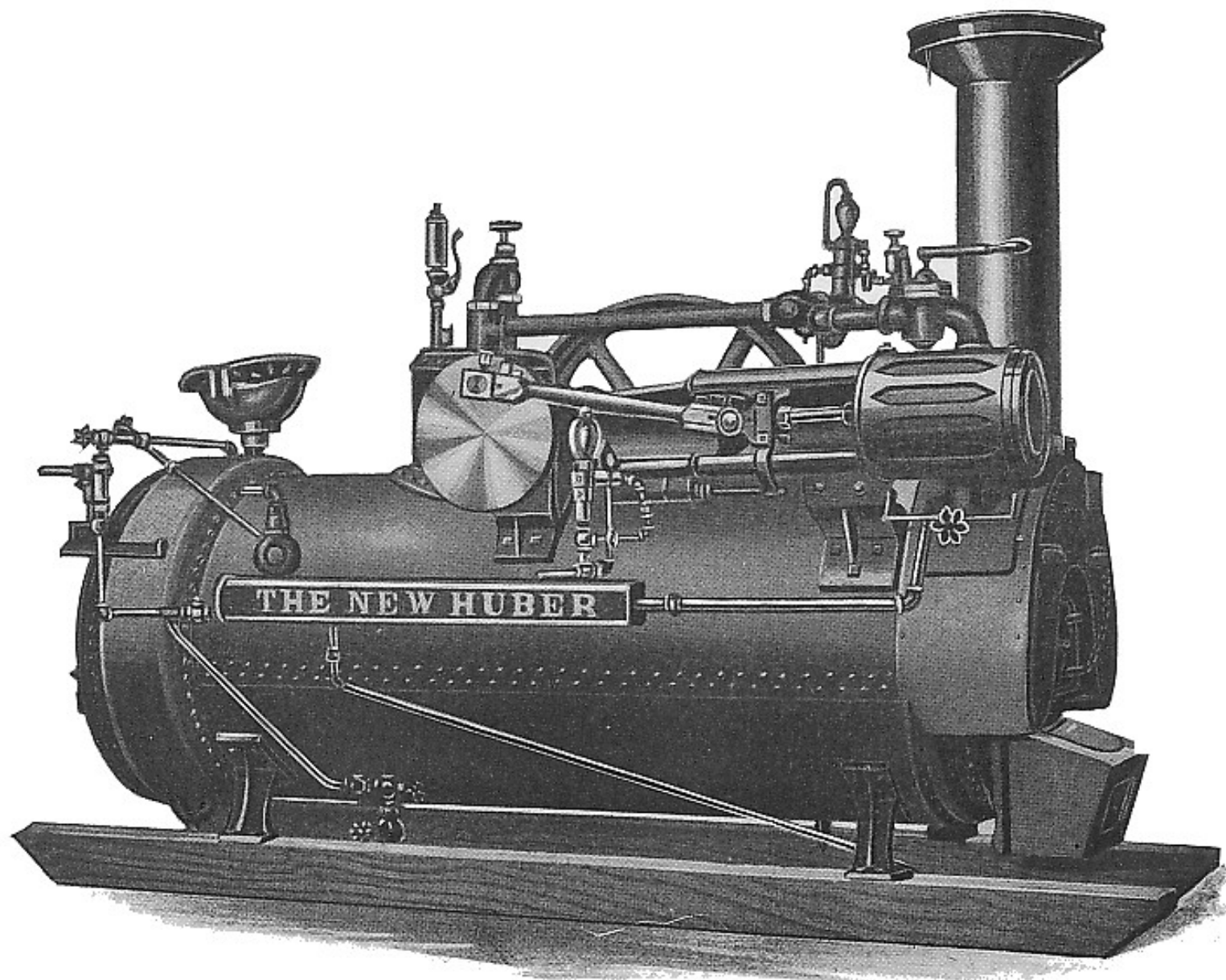


HAULING LOGS WITH THE CONTRACTOR

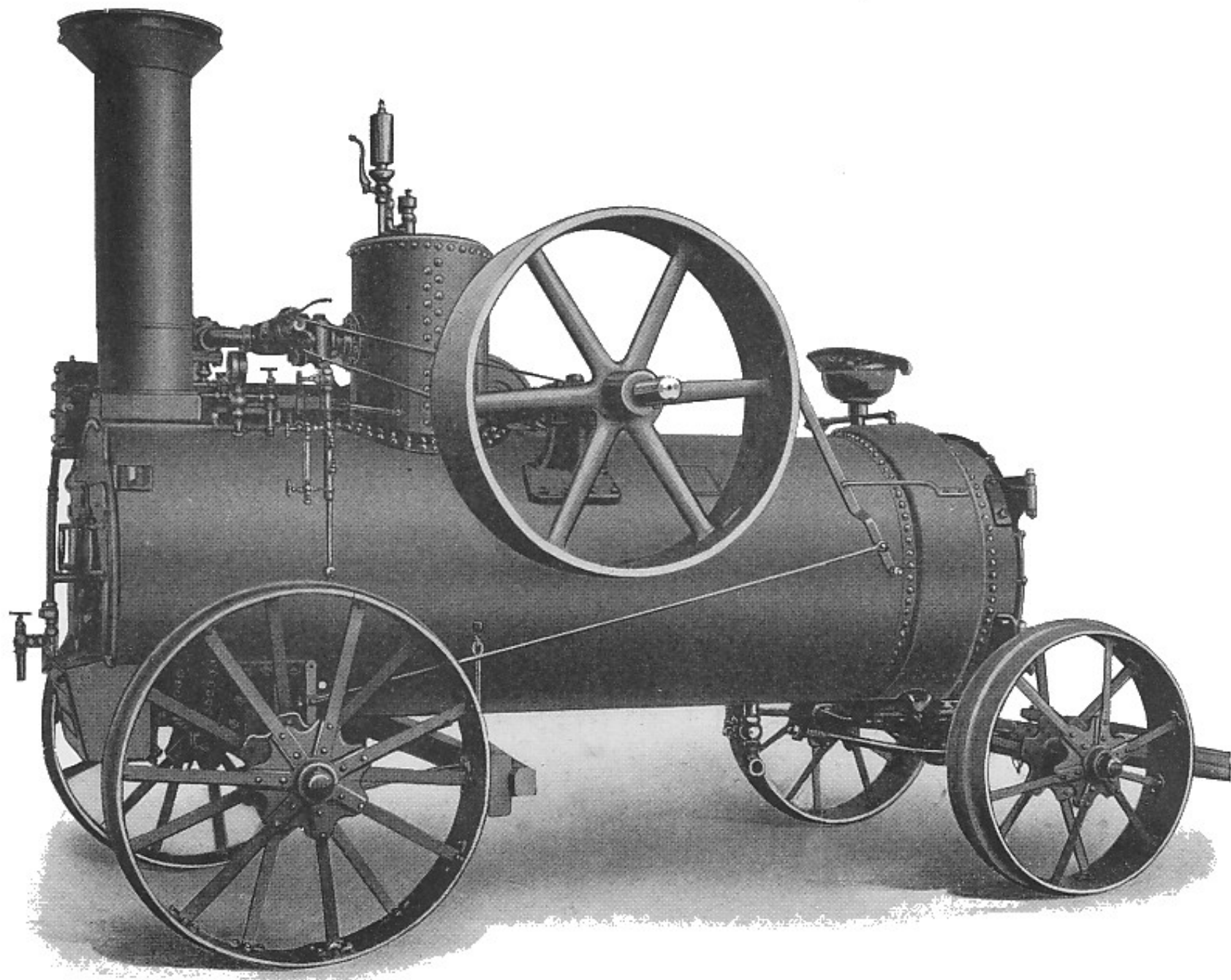


ROLLER EQUIPPED WITH DOUBLE-CYLINDER ENGINE

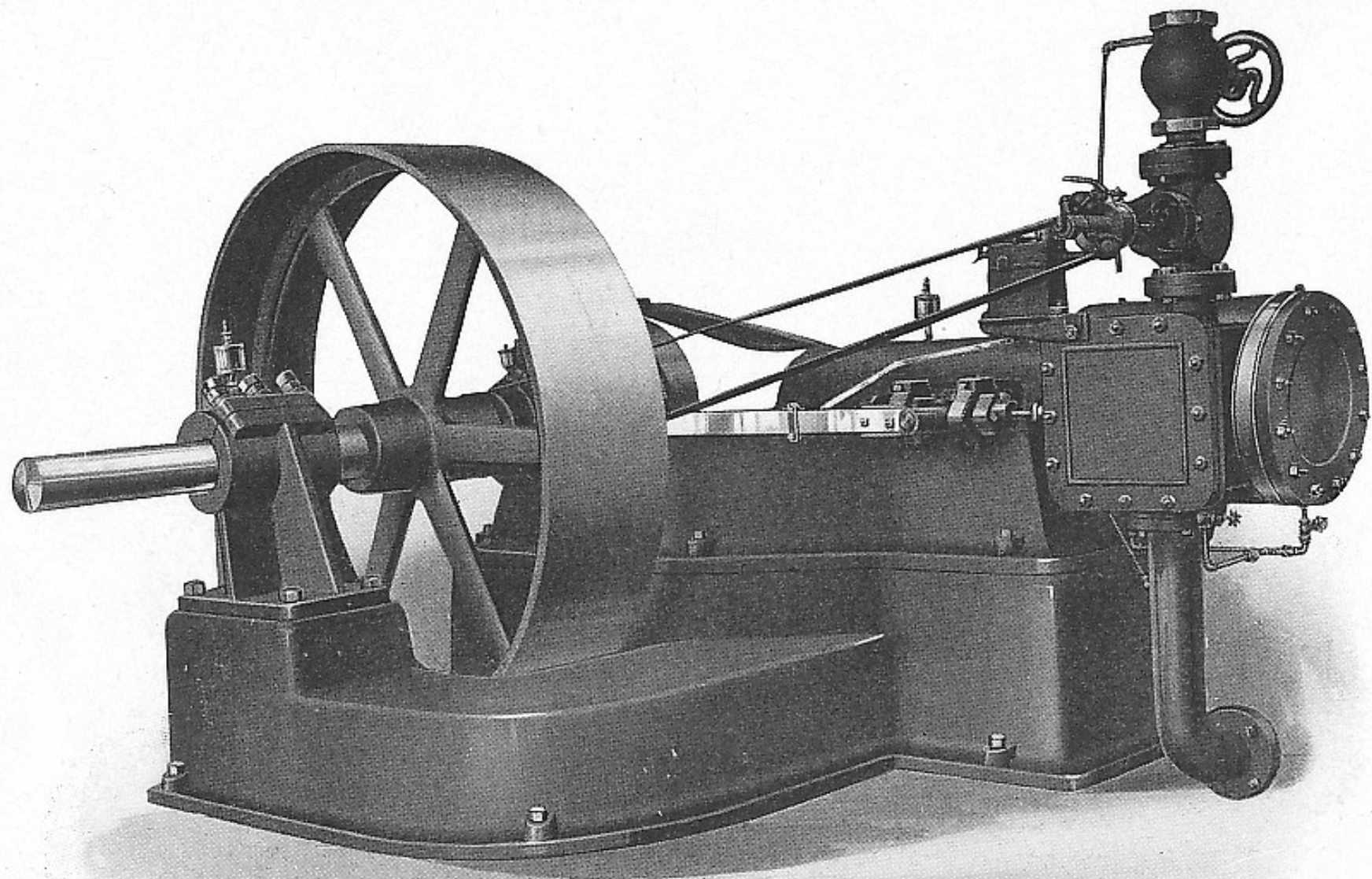




THE SKID ENGINE



THE PORTABLE ENGINE



DETACHED OUTFIT FOR HEAVY DUTY